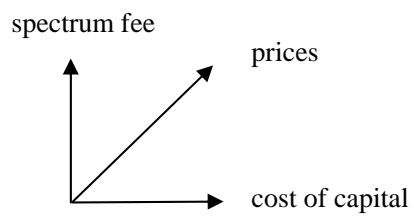
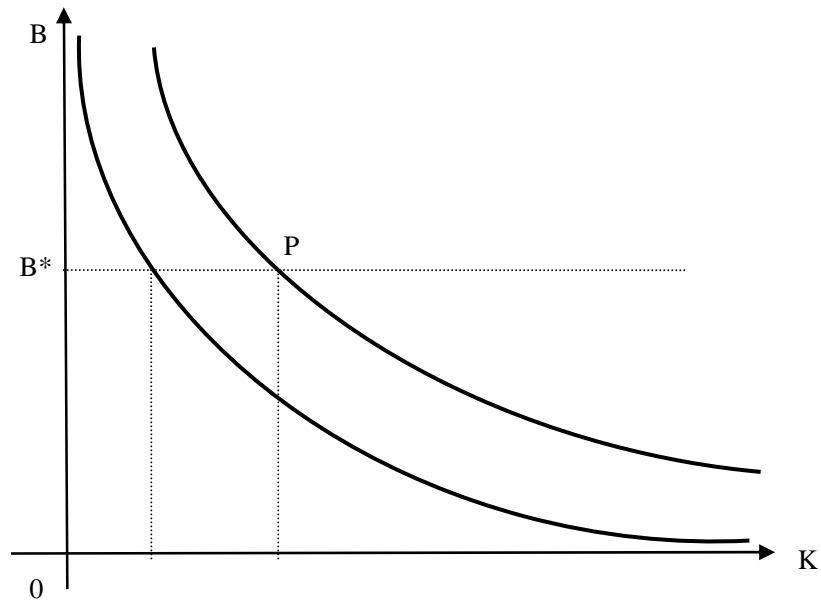


**Figure 1: Tradeoff between capital stock (K) and spectrum bandwidth (B)  
in the use of spectrum with given technology**



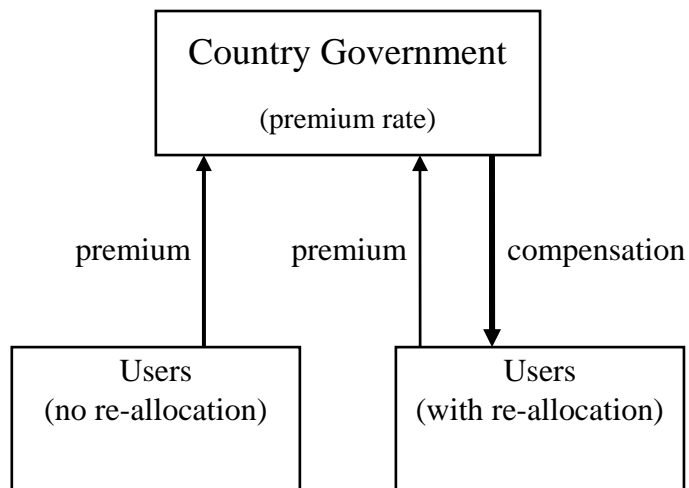
**Figure 2: Example of Spectrum Usage (Current System)**

| ALLOC      | Spectrum Band (Frequencies)                 | Band A                                      |    | Band B                 |    |    | Band C                | Band D                 | Band E                 |
|------------|---|---|----|------------------------|----|----|-----------------------|------------------------|------------------------|
|            | Objective                                   | Broadcast                                   |    | Commercial Mobile      |    |    | Security              | Internet Access        | Unspecified (ISM)      |
|            | Priority                                    | Primary                                     |    | Primary                |    |    | Primary               | Primary                | Primary                |
|            | Usage mode specified by government (Mode-G) | Exclusive                                   |    | Exclusive              |    |    | Exclusive             | Commons ("unlicensed") | Commons ("unlicensed") |
| ASSGN      | Spectrum Block (Area, Time)                 | A1  | A2 | B1                     | B2 | B3 | C                     | (D)                    | (E)                    |
|            | Duration                                    | 10yrs                                       |    | 5yrs                   |    |    | 5yrs                  | (indefinite)           | (indefinite)           |
|            | Spectrum User (Licensee)                    | Broadcast Stations                          |    | Mobile-phone Providers |    |    | Police, Fire Stations | (NA)                   | (NA)                   |
|            | Usage mode specified by user (Mode-L)       | Club/commons                                |    | Club                   |    |    | Exclusive             | (NA)                   | (NA)                   |
| Final user |   | Consumers, etc., of Services using Spectrum |    |                        |    |    |                       |                        |                        |

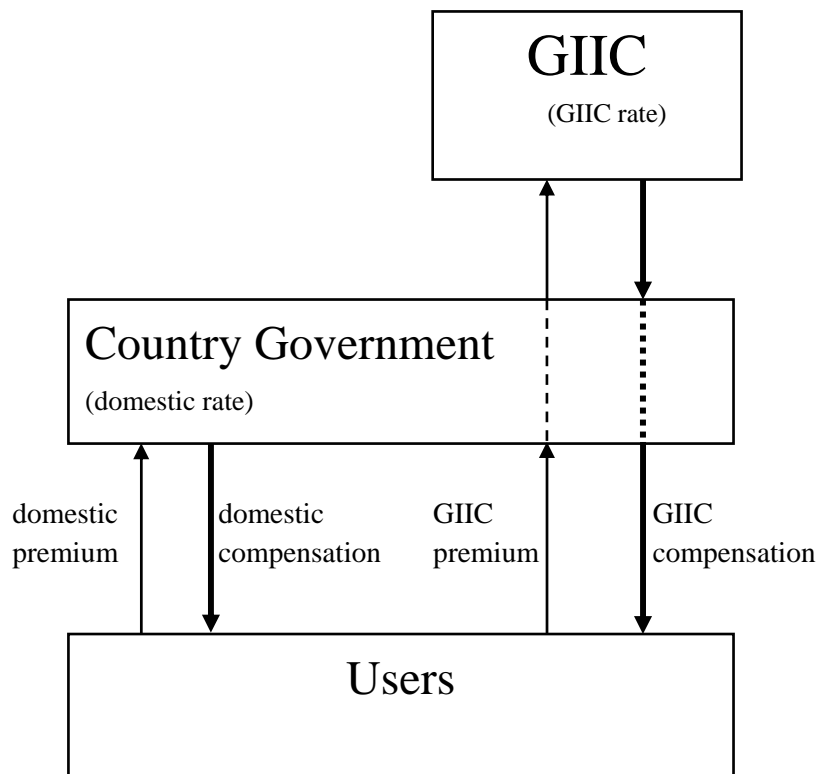
**Figure 3: Example of Spectrum Usage (MLA)** Note: Entries in *italics* are introduced anew in this example.

| ALLOC      | Spectrum Band                                       | Band A                                      |    | Band B   |                          |    | Band C                  |                                | Band D  | Band E  |                         |
|------------|---|---|----|--|--------------------------|----|-------------------------|--------------------------------|---|---|-------------------------|
|            | Objective   | Broadcast                                   |    | Commercial<br>Mobile                                     | <i>Unspecified</i>       |    | Security                | <i>Internet<br/>Access</i>     | Internet<br>Access                                    | Unspecified<br>(ISM)                                  |                         |
|            | Priority  | Primary                                     |    | Primary  | <i>Secondary</i>         |    | Primary                 | <i>Secondary</i>               | Primary   | Primary   |                         |
|            | Mode-G  | Exclusive                                   |    | Exclusive  | <i>Commons<br/>(UWB)</i> |    | Exclusive               | <i>Exclusive<br/>(overlay)</i> | <i>Exclusive</i>                                      | Commons   |                         |
| ASSGN      | License<br>(Spectrum Block)                         | A1  | A2 | B1   | B2                       | B3 | <i>BB</i>               | C                              | <i>CC</i>   | D   | <i>E</i>                |
|            | Duration  | 10yrs                                       |    | 5yrs   |                          |    | <i>5yrs</i>             | 5yrs                           | <i>5yrs</i>   | 5yrs  | <i>5yrs</i>             |
|            | Spectrum<br>User<br>(Licensee)                      | Broadcast<br>Stations                       |    | Mobile-phone<br>Providers                                |                          |    | <i>Public<br/>Agent</i> | Police, Fire<br>Stations       | <i>Union of<br/>Internet<br/>Access<br/>Providers</i> | <i>Union of<br/>Internet<br/>Access<br/>Providers</i> | <i>Public<br/>Agent</i> |
|            | Mode-L  | Club/<br>commons                            |    | Club   |                          |    | <i>Commons</i>          | <i>Club</i>                    | <i>Club</i>   | <i>Commons</i>  | <i>Commons</i>          |
|            | <i>Lease price</i>                                  |   |    | <i>( D e t e r m i n e d b y a u c t i o n )</i>         |                          |    |                         |                                |   |   |                         |
|            | <i>Amount<br/>ROD-insured<br/>(Relocation cost)</i> |   |    | <i>( S p e c i f i e d b y s p e c t r u m u s e r )</i> |                          |    |                         |                                |   |   |                         |
| Final user |   | Consumers, etc., of Services using Spectrum |    |  |                          |    |                         |                                |   |   |                         |

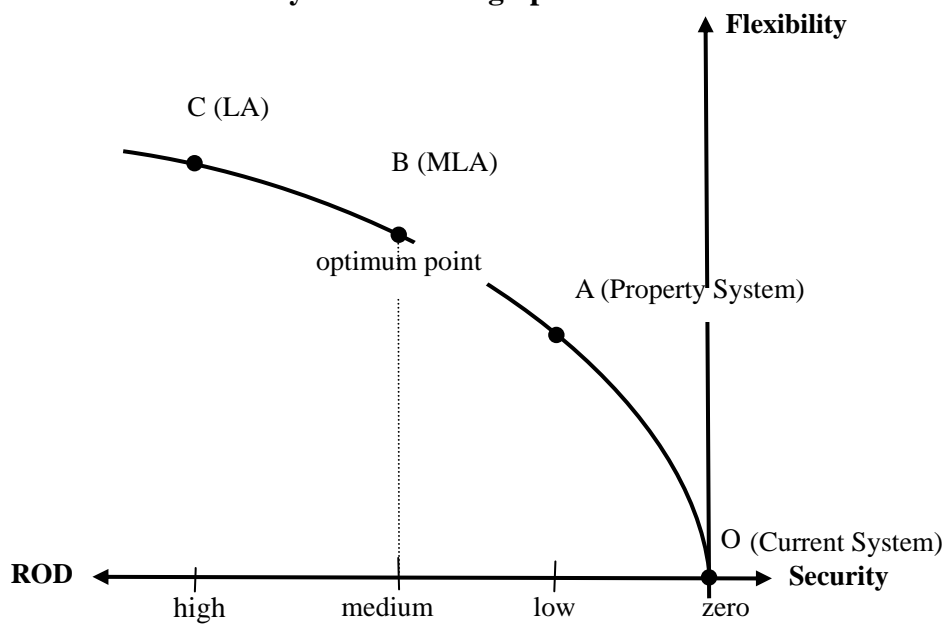
**Fig. 4: Insurance-Compensation for Re-Allocation**



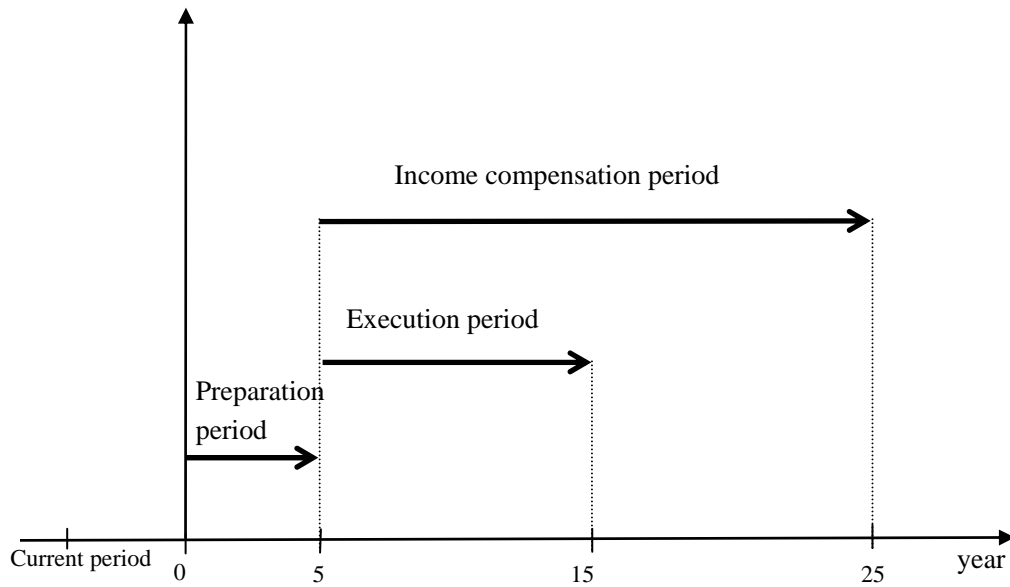
**Fig. 5: International Insurance-Compensation for Re-Allocation**



**Figure 6: Tradeoff between Security (ROD) and Flexibility in  
Alternative system for Using Spectrum**

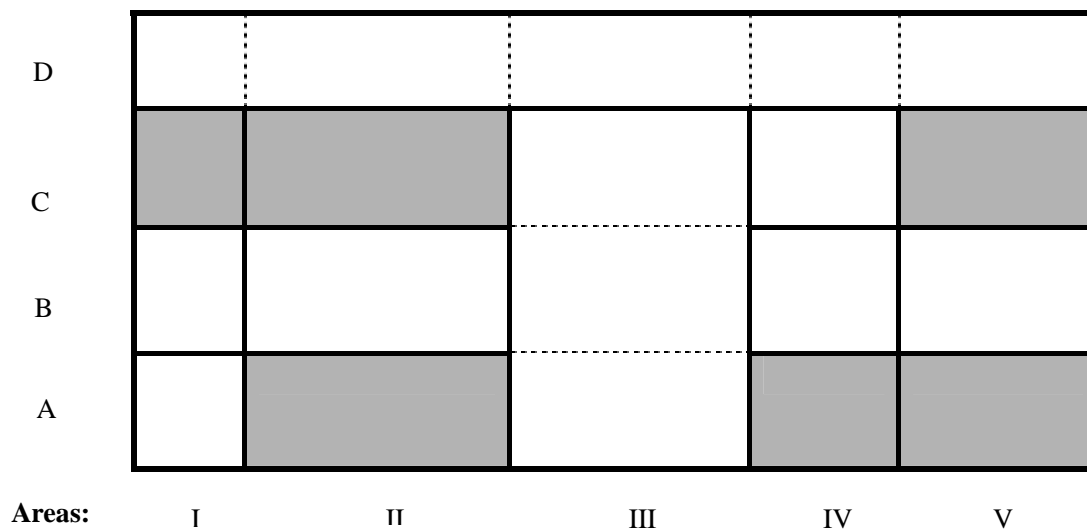


**Figure 7: Example of transition (case of  $M=5$ ,  $M=10$ ,  $M=20$ )**



**Figure 8: Establishing “benchmark lease prices (BLP)”**

**Spectrum  
Frequencies:**



- : BLP established by auction on newcomers
- : BLP calculated by interpolation



**Fig. 9: Various systems for using spectrum**

| System \ User   |                   | Usage Mode   |   |                   |
|---|-------------------|--|---|-------------------|
|   |                   | Exclusive  | Club  | Commons           |
| A.<br>Public Property<br>(Current System)             | private           | <b>licensed out</b><br>(no rent)                                       | <b>licensed without limit</b><br>(no rent)  | <b>unlicensed</b> |
|   | government        | direct agreement between government users / controller                 |   |                   |
| B.<br>Private or public property                      | private           | <b>auctioned out initially free resale</b>                             | (offered by private exclusive users)        |                   |
|   |                   |  | (offered by government users)               |                   |
|   | government        | direct agreement between government users / controller                 |   |                   |
| C.<br><i>Public property competitive lease* (MLA)</i> | <i>private</i>    | <i>auctioned out periodically</i>                                      | <i>(offered by private exclusive users)</i> |                   |
|   |                   |  | <i>(offered by public agents)</i>           |                   |
|   | <i>government</i> | <i>auctioned out periodically to public agents or government users</i> |   |                   |
| D.<br>Public property for direct open use             | private           | <b>unlicensed</b> (open use)   |   |                   |
|   | government        | direct agreement between government users / controller                 |   |                   |